

BESTSUB TECHNOLOGIES CO., LTD  
 RM810 EXCHANGE SQUARE, NO268 DONGFENG ZHONGROAD, YUEXIU DISTRICT,  
 GUANGZHOU 510030 CHINA

The following sample(s) was/were submitted and identified on behalf of the client as:

Sample Description : HAIR BAND (ROUND,HEAT, SUN+LOWER)  
 SGS Ref No. : CAN13-149054  
 Style / Item No. : TS01, TS02,TS03  
 Test Performed : Selected test(s) as requested by applicant  
 Sample Receiving Date : Sep 26, 2013  
 Test Performing Date : Sep 26, 2013 to Oct 11, 2013  
 Test Result(s) : For further details, please refer to the following page(s)

Test Requested	Result
To determine the Cadmium Content in the selected part(s) of submitted sample(s) with reference to Commission Regulation (EU) No 835/2012 amending Annex XVII of REACH Regulation (EC) No 1907/2006.	PASS
Determination of Lead (Pb) content in the submitted sample(s) in accordance with Commission Regulation (EU) No 836/2012 amending Annex XVII to REACH Regulation (EC) No 1907/2006 (Entry 63 of Annex XVII to Regulation (EC) No 1907/2006).	PASS
To determine Phthalates(DBP, BBP, DEHP, DINP, DNOP, DIDP) in the submitted sample(s) with reference to the Entry 51/52 of Regulation (EC) No. 552/2009 amending Annex XVII of REACH Regulation (EC) No. 1907/2006 (previously restricted under Directive 2005/84/EC).	PASS
To determine the release of Nickel(Ni) content in the submitted sample(s) in accordance with the Entry 27 of Regulation (EC) No. 552/2009 amending Annex XVII of REACH Regulation (EC) No. 1907/2006 (previously restricted under Directive 94/27/EC & 2004/96/EC).	PASS

Signed for and on behalf of  
 SGS-CSTC Ltd.



Yan Lau  
 Approved Signatory

This document is issued by the Company subject to its General Conditions of Service printed overleaf, available on request or accessible at <http://www.sgs.com/en/Terms-and-Conditions.aspx> and, for electronic format documents, subject to Terms and Conditions for Electronic Documents at <http://www.sgs.com/en/Terms-and-Conditions/Terms-e-Documents.aspx>. Attention is drawn to the limitation of liability, indemnification and jurisdiction issues defined therein. Any holder of this document is advised that information contained hereon reflects the Company's findings at the time of its intervention only and within the limits of Client's instructions, if any. The Company's sole responsibility is to its Client and this document does not exonerate parties to a transaction from exercising all their rights and obligations under the transaction documents. This document cannot be reproduced except in full, without prior written approval of the Company. Any unauthorized alteration, forgery or falsification of the content or appearance of this document is unlawful and offenders may be prosecuted to the fullest extent of the law. Unless otherwise stated the results shown in this test report refer only to the sample(s) tested and such sample(s) are retained for 30 days only.

Attention: To ensure the authenticity of testing /inspection report & certificate, please contact us at telephone: (86-755)83071443, or email: [CN.Doccheck@sgs.com](mailto:CN.Doccheck@sgs.com)

Test Results :

Test Part Description :

Specimen No.	SGS Sample ID	Description
1	CAN13-149054.001	Silvery metal screw
2	CAN13-149054.002	Silvery plated metal(body)
3	CAN13-149054.003	Black elastic band

Remarks :

- (1) 1 mg/kg = 0.0001%
- (2) MDL = Method Detection Limit
- (3) ND = Not Detected ( < MDL )
- (4) "-" = Not Regulated

**Commission Regulation (EU) No 835/2012 amending Annex XVII of REACH Regulation (EC) No 1907/2006-Cadmium (Cd)**

A. Test Method : With reference to US EPA Method 3050B:1996, analysis was performed by ICP-OES.

<u>Test Item(s)</u>	<u>Limit</u>	<u>Unit</u>	<u>MDL</u>	<u>001</u>	<u>002</u>
Cadmium (Cd)	100	mg/kg	5	ND	ND

B. Test Method : With reference to US EPA Method 3052:1996, analysis was performed by ICP-OES.

<u>Test Item(s)</u>	<u>Limit</u>	<u>Unit</u>	<u>MDL</u>	<u>003</u>
Cadmium (Cd)	100	mg/kg	5	ND

**Lead (Pb)**

A. Test Method : With reference to US EPA Method 3050B:1996, analysis was performed by ICP-OES.

<u>Test Item(s)</u>	<u>Limit</u>	<u>Unit</u>	<u>MDL</u>	<u>001</u>	<u>002</u>
Lead (Pb)	500	mg/kg	10	ND	14

B. Test Method : With reference to US EPA Method 3052:1996, analysis was performed by ICP-OES.

This document is issued by the Company subject to its General Conditions of Service printed overleaf, available on request or accessible at <http://www.sgs.com/en/Terms-and-Conditions.aspx> and, for electronic format documents, subject to Terms and Conditions for Electronic Documents at <http://www.sgs.com/en/Terms-and-Conditions/Terms-e-Documents.aspx>. Attention is drawn to the limitation of liability, indemnification and jurisdiction issues defined therein. Any holder of this document is advised that information contained hereon reflects the Company's findings at the time of its intervention only and within the limits of Client's instructions, if any. The Company's sole responsibility is to its Client and this document does not exonerate parties to a transaction from exercising all their rights and obligations under the transaction documents. This document cannot be reproduced except in full, without prior written approval of the Company. Any unauthorized alteration, forgery or falsification of the content or appearance of this document is unlawful and offenders may be prosecuted to the fullest extent of the law. Unless otherwise stated the results shown in this test report refer only to the sample(s) tested and such sample(s) are retained for 30 days only.

Attention: To ensure the authenticity of testing /inspection report & certificate, please contact us at telephone: (86-755)83071443, or email: [CN.Doccheck@sgs.com](mailto:CN.Doccheck@sgs.com)

<u>Test Item(s)</u>	<u>Limit</u>	<u>Unit</u>	<u>MDL</u>	<u>003</u>
Lead (Pb)	500	mg/kg	10	ND

**Entry 51 & 52 of Regulation (EC) No 552/2009 amending Annex XVII of REACH Regulation (EC) No 1907/2006 (previously restricted under Directive 2005/84/EC)**

Test Method : With reference to EN 14372: 2004, analysis was performed by GC-MS.

<u>Test Item(s)</u>	<u>CAS NO.</u>	<u>Limit</u>	<u>Unit</u>	<u>MDL</u>	<u>003</u>
Dibutyl Phthalate (DBP)	84-74-2	-	%(W/W)	0.003	ND
Benzylbutyl Phthalate (BBP)	85-68-7	-	%(W/W)	0.003	ND
Bis-(2-ethylhexyl) Phthalate (DEHP)	117-81-7	-	%(W/W)	0.003	ND
Total (DBP+BBP+DEHP)		0.1	%(W/W)	-	ND
Diisononyl Phthalate (DINP)	28553-12-0 / 68515-48-0	-	%(W/W)	0.010	ND
Di-n-octyl Phthalate (DNOP)	117-84-0	-	%(W/W)	0.003	ND
Diisodecyl Phthalate (DIDP)	26761-40-0 / 68515-49-1	-	%(W/W)	0.010	ND
Total (DINP+DNOP+DIDP)		0.1	%(W/W)	-	ND

Notes :

European Parliament adopted new phthalate Entry 51 & 52 of Regulation (EC) No 552/2009 amending Annex XVII of REACH Regulation (EC) No 1907/2006 (previously restricted under Directive 2005/84/EC);

(1-1) DBP, BBP and DEHP are totally banned for use in any toys on childcare articles where their concentration exceeds 0.1% by mass.

(1-2) DINP, DNOP, DIDP are totally banned for use in toys and childcare articles that can be mouthed where their concentration exceeds 0.1% by mass.

**Entry 27 of Regulation (EC) No 552/2009 amending Annex XVII of REACH Regulation (EC) No 1907/2006 (previously restricted under Directive 94/27/EC and 2004/96/EC)– Nickel release**

Test Method : As specified in EN 1811: 2011+ AC:2012,.Analysis was performed by ICP-OES.

This document is issued by the Company subject to its General Conditions of Service printed overleaf, available on request or accessible at <http://www.sgs.com/en/Terms-and-Conditions.aspx> and, for electronic format documents, subject to Terms and Conditions for Electronic Documents at <http://www.sgs.com/en/Terms-and-Conditions/Terms-e-Documents.aspx>. Attention is drawn to the limitation of liability, indemnification and jurisdiction issues defined therein. Any holder of this document is advised that information contained hereon reflects the Company's findings at the time of its intervention only and within the limits of Client's instructions, if any. The Company's sole responsibility is to its Client and this document does not exonerate parties to a transaction from exercising all their rights and obligations under the transaction documents. This document cannot be reproduced except in full without prior written approval of the Company. Any unauthorized alteration, forgery or falsification of the content or appearance of this document is unlawful and offenders may be prosecuted to the fullest extent of the law. Unless otherwise stated the results shown in this test report refer only to the sample(s) tested and such sample(s) are retained for 30 days only.

Attention: To ensure the authenticity of testing /inspection report & certificate, please contact us at telephone: (86-755)83071443, or email: [CN.Doccheck@sgs.com](mailto:CN.Doccheck@sgs.com)

<u>Test Item(s)</u>	<u>Limit</u>	<u>Unit</u>	<u>MDL</u>	<u>002</u>
Sample Area	-	sq. cm	-	16.42
Volume of Test Solution	-	ml	-	16.42
Spot Test	-	-	-	Positive
Nickel Release - Trial 1	0.50	µg/sq. cm/week	0.10	ND
Nickel Release - Trial 2	0.50	µg/sq. cm/week	0.10	ND
Nickel Release - Trial 3	0.50	µg/sq. cm/week	0.10	ND

**Conclusion**

**PASS**

Notes :

- (1) Max. limit specified by entry 27 of Regulation (EC) No 552/2009 amending Annex XVII of REACH Regulation (EC) No 1907/2006 (previously restricted under Directive 94/27/EC and 2004/96/EC).
- (2) As Nickel is found to be positive by CR 12471:2002, simulation of wear and corrosion by the EN 12472:2005 + A1:2009 is performed.

Comments are given according to Annex A of EN1811:2011 as below:

Type of sample	Nickel Release (µg/cm <sup>2</sup> /week)		
	PASS	NO CLEAR DECISION*	FAIL
Article with Nickel release limit of 0.5µg/cm <sup>2</sup> /week	≤ 0.28	>0.28 and <0.88	≥ 0.88
Article with Nickel release limit of 0.2µg/cm <sup>2</sup> /week	≤ 0.11	>0.11 and <0.35	≥ 0.35

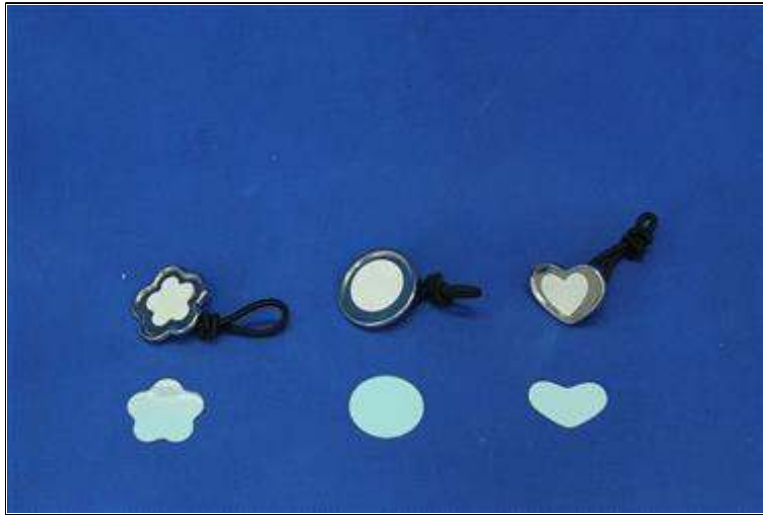
\* No clear decision = Inconclusive

This document is issued by the Company subject to its General Conditions of Service printed overleaf, available on request or accessible at <http://www.sgs.com/en/Terms-and-Conditions.aspx> and, for electronic format documents, subject to Terms and Conditions for Electronic Documents at <http://www.sgs.com/en/Terms-and-Conditions/Terms-e-Documents.aspx>. Attention is drawn to the limitation of liability, indemnification and jurisdiction issues defined therein. Any holder of this document is advised that information contained hereon reflects the Company's findings at the time of its intervention only and within the limits of Client's instructions, if any. The Company's sole responsibility is to its Client and this document does not exonerate parties to a transaction from exercising all their rights and obligations under the transaction documents. This document cannot be reproduced except in full, without prior written approval of the Company. Any unauthorized alteration, forgery or falsification of the content or appearance of this document is unlawful and offenders may be prosecuted to the fullest extent of the law. Unless otherwise stated the results shown in this test report refer only to the sample(s) tested and such sample(s) are retained for 30 days only.

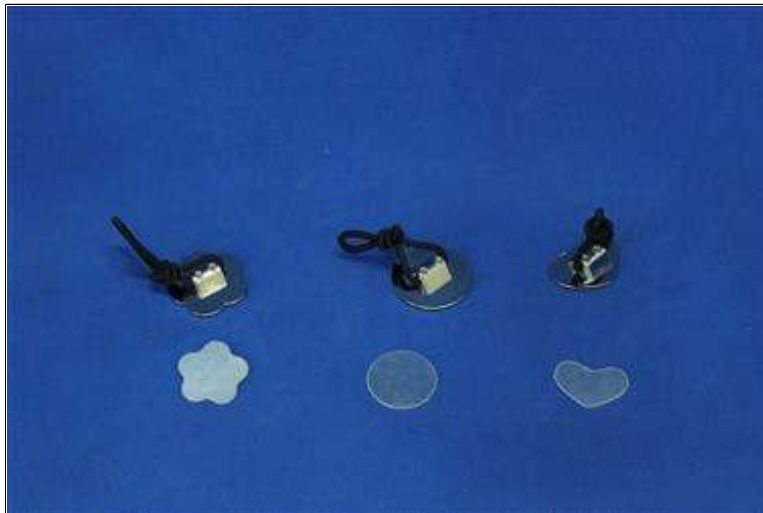
Attention: To ensure the authenticity of testing /inspection report & certificate, please contact us at telephone: (86-755)83071443, or email: [CN.Doccheck@sgs.com](mailto:CN.Doccheck@sgs.com)



Sample photo:



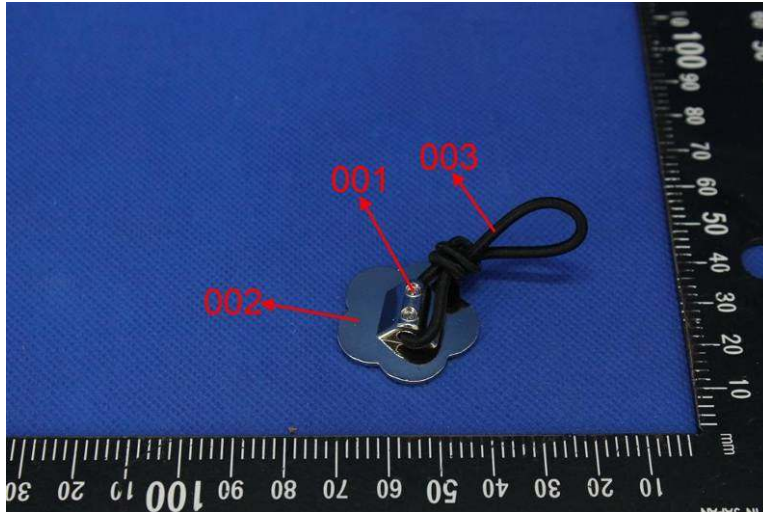
Product photo



Product photo

This document is issued by the Company subject to its General Conditions of Service printed overleaf, available on request or accessible at <http://www.sgs.com/en/Terms-and-Conditions.aspx> and, for electronic format documents, subject to Terms and Conditions for Electronic Documents at <http://www.sgs.com/en/Terms-and-Conditions/Terms-e-Document.aspx>. Attention is drawn to the limitation of liability, indemnification and jurisdiction issues defined therein. Any holder of this document is advised that information contained hereon reflects the Company's findings at the time of its intervention only and within the limits of Client's instructions, if any. The Company's sole responsibility is to its Client and this document does not exonerate parties to a transaction from exercising all their rights and obligations under the transaction documents. This document cannot be reproduced except in full without prior written approval of the Company. Any unauthorized alteration, forgery or falsification of the content or appearance of this document is unlawful and offenders may be prosecuted to the fullest extent of the law. Unless otherwise stated the results shown in this test report refer only to the sample(s) tested and such sample(s) are retained for 30 days only.

Attention: To ensure the authenticity of testing /inspection report & certificate, please contact us at telephone: (86-755)83071443, or email: [CN.Doccheck@sgs.com](mailto:CN.Doccheck@sgs.com)



\*\*\* End of Report \*\*\*

This document is issued by the Company subject to its General Conditions of Service printed overleaf, available on request or accessible at <http://www.sgs.com/en/Terms-and-Conditions.aspx> and, for electronic format documents, subject to Terms and Conditions for Electronic Documents at <http://www.sgs.com/en/Terms-and-Conditions/Terms-e-Document.aspx>. Attention is drawn to the limitation of liability, indemnification and jurisdiction issues defined therein. Any holder of this document is advised that information contained hereon reflects the Company's findings at the time of its intervention only and within the limits of Client's instructions, if any. The Company's sole responsibility is to its Client and this document does not exonerate parties to a transaction from exercising all their rights and obligations under the transaction documents. This document cannot be reproduced except in full without prior written approval of the Company. Any unauthorized alteration, forgery or falsification of the content or appearance of this document is unlawful and offenders may be prosecuted to the fullest extent of the law. Unless otherwise stated the results shown in this test report refer only to the sample(s) tested and such sample(s) are retained for 30 days only.

Attention: To ensure the authenticity of testing / inspection report & certificate, please contact us at telephone: (86-755)83071443, or email: [CN.Doccheck@sgs.com](mailto:CN.Doccheck@sgs.com)